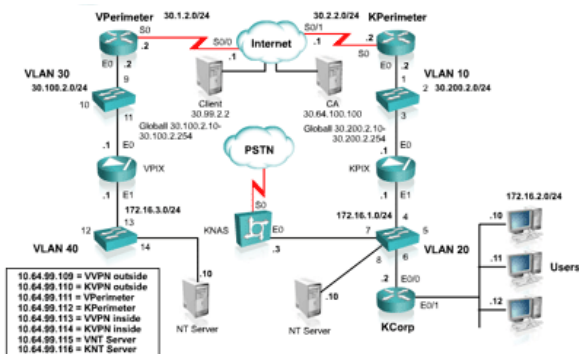


Cisco PIX Firewall Lab Online

The Topology diagram is shown below:



[Basci PIX Configuration](#)]

[Installing WebSENSE](#)]

[Config NAT Stats and Conduits](#)]

[Config Multiple Interfaces](#)]

[Config Authentication](#)]

[Config the Primary PIX Firewall](#)]

[Verify IPsec Configuration](#)]

[Passwrod Recovery & Image Update](#)]

[Configuring the CSIS Feature Set](#)]

[Configure Cisco Secure ACS NT](#)]

[Configure AAA and Authentication Proxy](#)]

[Verify Authentication Proxy Configuration](#)]

[Configure the PIX as a DHCP Server](#) [Configuring PIX as a DHCP Client](#)]

[Configuring Logging](#)]

[Configuring Logging -Verification](#)]

[Denying Outbound Traffic](#)]

[Allowing Outbound Traffic](#)]

[Configure PIX to work with Websense](#)]

[Configure WebSense to Block by URL](#)]

[WebSense to Block by Workstation](#)]

[Configure the Fixup Protocol on PIX](#)]

[Configuring PIX for IDS Signatures](#)]

[CSACS Install and Add User](#)]

[Configure IKE and IPsec on the PIX](#)]

And if you need some Ebooks for CCNP study, you can visit this post: [CCSP Books](#)