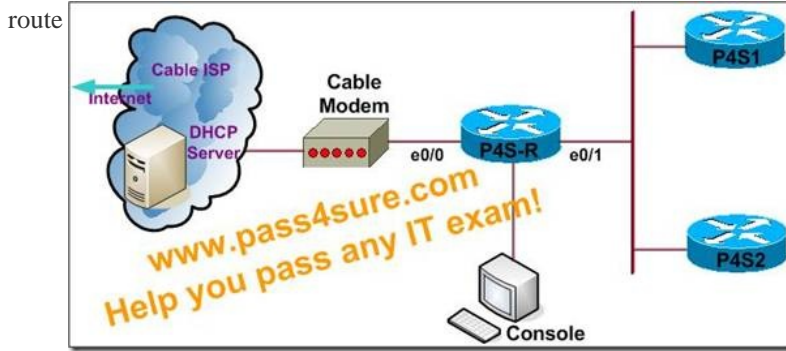


CCNP ISCW(642-825) Lab - PPPoE

Pass4sure is a small export company .This firm has an existing enterprise network that is made up exclusively of routers that are using EIGRP as the IGP. Its network is up and operating normally. As part of its network expansion, Pass4sure has decided to connect to the internet by a broadband cable ISP. Your task is to enable this connection by use of the information below.

Connection Encapsulation: PPP Connection Type: PPPoE client Connection Authentication: None Connection MTU: 1492 bytes
Address: Dynamically assigned by the ISP Outbound Interface: E0/0 You will know that the connection has been successfully enabled when you can ping the simulated Internet address of 172.16.1.1 Note: Routing to the ISP: Manually configured default



```

P4S-R# show ip route
....
Gateway of last resort is not set
 192.168.1.0/27 is subnetted, 7 subnets
 C    192.168.1.0 is directly connected, Ethernet0/1
 D    192.168.1.32 [90/307200] via 192.168.1.2, 00:02:16,Ethernet0/1
 D    192.168.1.64 [90/307200] via 192.168.1.2, 00:02:17,Ethernet0/1
 D    192.168.1.96 [90/307200] via 192.168.1.2, 00:02:17,Ethernet0/1
 D    192.168.1.128 [90/307200] via 192.168.1.3, 00:02:17,Ethernet0/1
 D    192.168.1.192 [90/307200] via 192.168.1.3, 00:02:17,Ethernet0/1
 D    192.168.1.224 [90/307200] via 192.168.1.3, 00:02:17,Ethernet0/1

P4S-R# show run
....
no service password-encryption
!
hostname P4S-R
!
boot-start-marker
boot-end-marker
!
no aaa new-model
resource policy
clock timezone PST 0
ip subnet-zero
no ip dhcp use vrf connected
!
interface Ethernet0/0
description link to cable modem
no ip address
shutdown
!
interface Ethernet0/1
description link to corporate network
ip address 192.168.1.1 255.255.255.224
!
interface Ethernet0/2
no ip address
!
interface Ethernet0/3
no ip address
shutdown
!
router eigrp 1
network 192.168.1.0
auto-summary
!
line con 0
line vty 0 15
end
    
```

Pass4sure help you pass any IT exam!

Solutions: P4S-R(config)#int e0/0 P4S-R(config-if)#pppoe enable P4S-R(config-if)#pppoe-client
 dial-pool-number 1 P4S-R(config-if)#no sh P4S-R(config-if)#exit P4S-R(config)#int dialer1
 P4S-R(config-if)#encapsulation ppp P4S-R(config-if)#ip address negotiated P4S-R(config-if)#dialer pool 1
 P4S-R(config-if)#ip mtu 1492 P4S-R(config-if)#no shut P4S-R(config-if)#exit P4S-R(config)#ip route
 0.0.0.0 0.0.0.0 dialer1 <---- ip routing is default static to internet provider P4S-R#copy run start **The test ip address**
given in the scenario: P4S-R# ping 172.16.1.1 !!!!! <----- if ping successful, you have completed this lab!

That is all, hope to helpful for you. Best Luck for ur ISCW 642-825 Exam. If you need the complete pass4sure test questions for 642-825 Exam, you can visit [Latest Pass4sure 642-825](#), maye it helpful for ur exam!