

[7/Mar/2019 Updated PassLeader Free New Update AZ-202 Exam Questions Collection

New Updated AZ-202 Exam Questions from PassLeader AZ-202 PDF dumps! Welcome to download the newest PassLeader AZ-202 VCE dumps: <https://www.passleader.com/az-202.html> (150 Q&As) Keywords: AZ-202 exam dumps, AZ-202 exam questions, AZ-202 VCE dumps, AZ-202 PDF dumps, AZ-202 practice tests, AZ-202 study guide, AZ-202 braindumps, Microsoft Azure Developer Certification Transition Exam P.S. New AZ-202 dumps PDF:

<https://drive.google.com/open?id=1q16fluansPX6oRsh6xCyVACMIbBIzUIU> P.S. New AZ-203 dumps PDF:

https://drive.google.com/open?id=1jey9nt3_9Hc8i_iXXXps52RXsEo3gi5u NEW QUESTION 1 A company is migrating an existing on-premises third-party website to Azure. The website is stateless. The company does not have access to the source code for the website. They do have the original installer. The number of visitors at the website varies throughout the year. The on-premises infrastructure was resized to accommodate peaks but the extra capacity was not used. You need to implement a virtual machine scale set instance. What should you do? A. Use only default diagnostics metrics to trigger autoscaling.

B. Create 100 autoscale settings per resource. C. Scale out by one instance when the average CPU usage of one of the instances is over 80 percent. D. Use Azure Monitor to create autoscale settings using custom metrics. Answer: D Explanation: Azure Monitor autoscaling allows you to scale the number of running instances up or down, based on telemetry data (metrics).

<https://docs.microsoft.com/en-us/azure/azure-monitor/platform/autoscale-common-metrics> NEW QUESTION 2 You are developing an Azure Durable Function instance. You need to add a delay by using a durable timer. What type of function should you use? A. Webhook B. Orchestrator C. Client D. Activity Answer: B Explanation: Durable Functions provides durable timers for use in orchestrator functions to implement delays or to set up timeouts on async actions.

<https://docs.microsoft.com/en-us/azure/azure-functions/durable/durable-functions-overview> NEW QUESTION 3 Members of the finance department for a company review and make changes to a Microsoft Excel workbook that is hosted on OneDrive. The workbook contains projected costs and revenue for a project. You need to develop an Azure Function that ingests data from the modified workbook and places it into a Microsoft Word document. Which two objects should you implement? (Each correct answer presents part of the solution. Choose two.) A. An Excel table input binding B. An auth token input binding C. An Excel table output binding D. A group subscription E. A group conversation subscription Answer: AD Explanation: Azure Functions supports trigger, input, and output bindings for external files. These bindings create API connections to SaaS providers, or use existing API connections from your Function App's resource group. <https://docs.microsoft.com/en-us/azure/azure-functions/functions-bindings-external-file>

NEW QUESTION 4 You are creating an IoT solution using Azure Time Series Insight. You configure the environment to ensure that all data for the current year is available. What should you do? A. Change the pricing tier. B. Add a disaster recovery (DR) strategy. C. Set a value for the Data Retention time setting. D. A reference data. Answer: C Explanation: The data is retained in Time Series Insights based on the selected retention days or maximum limits. Retention is configurable in the Azure portal. The longest allowable retention period is a rolling year of 12 months + 1 month, which is defined as 400 days.

<https://azure.microsoft.com/en-us/pricing/details/time-series-insights/> NEW QUESTION 5 You develop a serverless application using several Azure Functions. These functions connect to data from within the code. You want to configure tracing for an Azure Function App project. You need to change configuration settings in the host.json file. Which tool should you use?

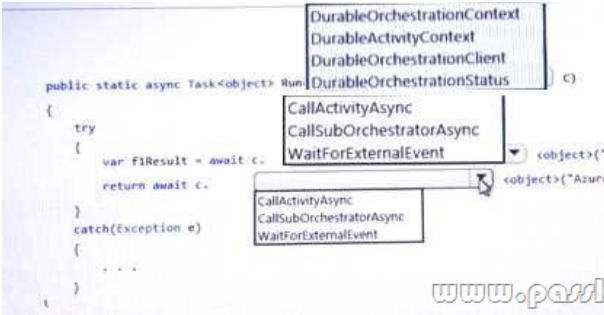
A. Azure Portal B. Azure PowerShell C. Azure Functions Core Tools D. Visual Studio Answer: C

NEW QUESTION 6 You develop an app that processes data packages that are less than 10 KB. The solution processes and then deletes the data packages. Data must be processed by only one instance and must persist if the app is reset but not after it is processed. You need to select a storage technology for the solution while minimizing costs. Which data storage service should you use? A. Azure Table Storage

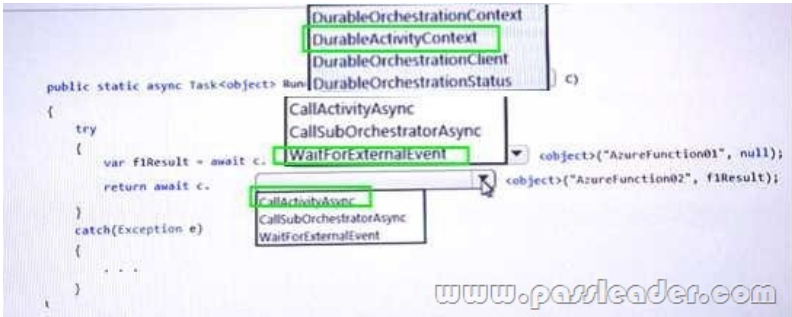
B. Azure Queue Storage C. Azure Blob Storage D. Azure Redis Cache E. Azure SQL Database Answer: C

NEW QUESTION 7 You are developing a project management service by using ASP.NET. The service hosts conversations, files, to-do lists, and a calendar that users can interact with at any time. The application uses Azure Search for allowing users to search for keywords in the project data. You need to implement code that creates the object which is used to create indexes in the Azure Search service. Which two objects should you use? (Each

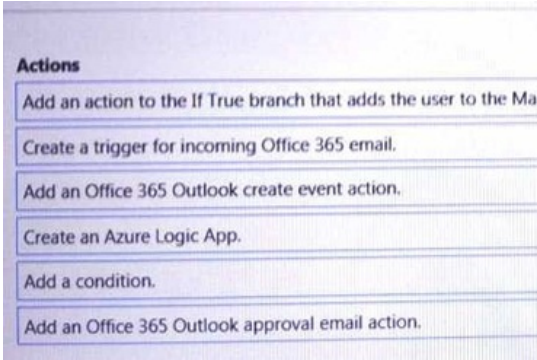
correct answer presents part of the solution. Choose two.) A. SearchService B. SearchIndexClient C. SearchServiceClient D. SearchCredentials Answer: CD
NEW QUESTION 8 You are a developer for a SaaS company that offers many web services. All web services for the company must meet the following requirements: - Use API Management to access the services - Use OpenID Connect for authentication - Prevent anonymous usage A recent security audit found that several web services can be called without any authentication. Which API Management policy should you implement? A. validate-jwt B. authentication-certificate C. check-header D. jsonp Answer: B
NEW QUESTION 9 HotSpot You are developing a solution that requires serverless code execution in Azure. The solution has two functions that must run in a specific order. You need to ensure that the second function can use the output from the first function. How should you complete the code? (To answer, select the appropriate options in the answer area.)



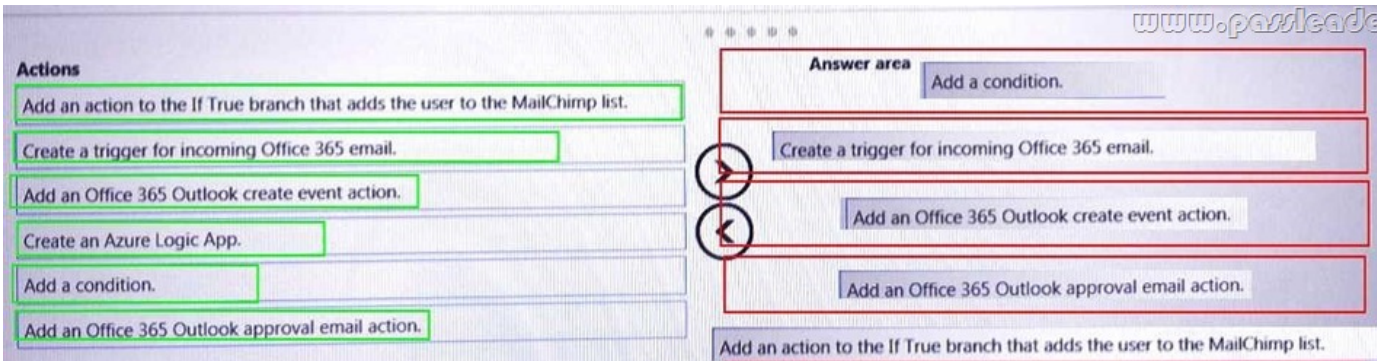
Answer:



NEW QUESTION 10 Drag and Drop You develop cloud solutions an organization. The organization creates a mailing list for each new project that is announced to the public. You add users manually to a Mail Chimp list when a request email is sent to a community manager's Microsoft Office 365 email account. You need to automate the process of adding new users to the Mail Chimp list by using an Azure Logic App. Which five actions should you perform in sequence? (To answer, move the appropriate actions form the list of actions to the answer area and arrange them in the correct order.)



Answer:



Case Study 1 - Litware, Inc. You are a developer for Litware, Inc., which is a SaaS company that provides a solution for managing employee expenses. The solution consists of an ASP.NET Core Web API project that is deployed as an Azure Web App.

..... NEW QUESTION 111 You need to resolve the log capacity issue. What should you do? A. Implement Application Insights Sampling. B. Change the minimum log level in the host.json file for the function. C. Create an Application Insights Telemetry Filter. D. Set a LogCategoryFilter during startup. Answer: A NEW QUESTION 112 You need to ensure that the SecurityPin security requirements are met. Solution: 1. Using the Azure Portal, add Data Masking to the SecurityPin column, and exclude the dbo user. 2. Add a SQL security policy with a filter predicate based on the user identity. Does the solution meet the goal? A. Yes B. No Answer: B NEW QUESTION 113 You need to ensure that the SecurityPin security requirements are met. Solution: Enable Always Encrypted for the SecurityPin column using a certificate contained in Azure Key Vault and grant the WebAppIdentity service principal access to the certificate. Does the solution meet the goal? A. Yes B. No Answer: A NEW QUESTION 114

..... Case Study 2 - Proseware, Inc. You are a developer for Proseware, Inc. You are developing an application that applies a set of governance policies for Proseware's internal services, external services, and applications. The application will also provide a shared library for common functionality. NEW QUESTION 121 You need to ensure that authentication events are triggered and processed according to the policy. Solution: 1. Ensure that sign-out events have a subject prefix. 2. Create an Azure Event Grid subscription that uses the subject begins with filter. Does the solution meet the goal? A. Yes B. No Answer: A NEW QUESTION 122 You need to ensure that authentication events are triggered and processed according to the policy. Solution: Create a new Azure Event Grid topic and add a subscription for the events. Does the solution meet the goal? A. Yes B. No Answer: B NEW QUESTION 123 You need to meet the scaling requirement for Policy Service. What should you store in Azure Redis Cache? A. HttpContext.Items B. View State C. Session State D. TempData Answer: C NEW QUESTION 124

..... Case Study 3 - Best for You Organics Company Best for You Organics Company is a global restaurant franchise that has multiple locations. The company wants to enhance user experiences and vendor integrations. The company plans to implement automated mobile ordering and delivery services. NEW QUESTION 131 You need to meet the vendor notification requirement. Solution: Configure notifications in the Azure API Management instance. Does the solution meet the goal? A. Yes B. No Answer: B Explanation: Use a custom outbound Azure API Management policy. Attention the Scenario: If a vendor is nearing the number of calls or bandwidth limit, the API must trigger email notifications to the vendor. (API usage must not exceed 5,000 calls and 50,000 kilobytes of bandwidth per hour per vendor.) <https://docs.microsoft.com/en-us/azure/api-management/api-management-howto-policies> NEW QUESTION 132 You need to debug the user greeting issue. What should you use? A. Bot Framework Channel Inspector B. Bot Connector Service C. Azure Compute Emulator D. Azure Application Insights E. Bot Framework Emulator Answer: E Explanation: Attention the Scenario: The chatbot's greeting does not show the user's name. You need to debug the chatbot locally. Debug your bot using an integrated development environment (IDE) such as Visual Studio or Visual Studio Code and the Bot Framework Emulator. You can use these methods to debug any bot locally.

<https://docs.microsoft.com/en-us/azure/bot-service/bot-service-debug-bot?view=azure-bot-service-4.0> NEW QUESTION 133 You need to resolve the delivery API error. What should you do? A. Implement simple retry by using the EnableRetryOnFailure feature of Entity Framework. B. Implement exponential backoff by using the EnableRetryOnFailure feature of Entity Framework. C. Implement the Circuit Breaker pattern by using the EnableRetryOnFailure feature of Entity Framework. D. Invoke accustom execution strategy in Entity Framework. Answer: A Explanation:

<https://stackoverflow.com/questions/47558062/error-19-physical-connection-error/47559967> NEW QUESTION 134 Case Study 4 - Coho Winery Coho Winery produces, bottles, and distributes a variety of wines globally. You are a developer implementing highly scalable and resilient applications to support online order processing by using Azure solutions. NEW QUESTION 141 You need to meet the LabelMaket application. Solution: Create a conditional access policy and assign it to the Azure Kubernetes service cluster. Does the solution meet the goal? A. Yes B. No Answer: B Explanation: Attention the Scenario: The LabelMaker applications must be secured by using an AAD account that has full access to all namespaces of the Azure Kubernetes Service (AKS) cluster. Before an Azure Active Directory account can be used with the AKS cluster, a role binding or cluster role binding needs to be created.

<https://docs.microsoft.com/en-us/azure/aks/aad-integration> NEW QUESTION 142 You need to troubleshoot the order workflow. What should you do? (Each correct answer presents part of the solution. Choose two.) A. Review the run history. B. Review the trigger history. C. Review the API connections. D. Review the activity log. Answer: BD Explanation: Attention the Scenario: The order workflow fails to run upon initial deployment to Azure. Deployment errors arise from conditions that occur during the deployment process. They appear in the activity log. <https://docs.microsoft.com/en-us/azure/azure-resource-manager/resource-group-audit> NEW QUESTION 143 You need to access user claims in the e-commerce web app. What should you do first? A. Update the e-commerce web app to read the HTTP request header values. B. Assign the Contributor RBAC role to the e-commerce web app by using the Resource Manager create role assignment API. C. Write custom code to make a Microsoft Graph API call from the e-commerce web app. D. Using the Azure CU enable Cross-origin resource sharing (CORS) from the e-commerce checkout API to the e-commerce web app. Answer: C NEW QUESTION 144 Download the newest PassLeader AZ-202 dumps from passleader.com now! 100% Pass Guarantee! AZ-202 PDF dumps & AZ-202 VCE dumps: https://www.passleader.com/az-202.html (150 Q&As) (New Questions Are 100% Available and Wrong Answers Have Been Corrected! Free VCE simulator!) P.S. New AZ-202 dumps PDF: <https://drive.google.com/open?id=1q16fluansPX6oRsh6xCyVACMIbBIzUIU> P.S. New AZ-203 dumps PDF: https://drive.google.com/open?id=1jey9nt3_9Hc8i_iXXXps52RXsEo3gi5u