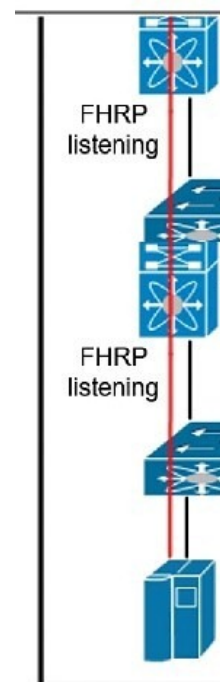


## [28/Nov/2018 Updated All Vaild 300-165 275q Braindump Offered By PassLeader For Free Download

New Updated 300-165 Exam Questions from PassLeader 300-165 PDF dumps! Welcome to download the newest PassLeader 300-165 VCE dumps: <https://www.passleader.com/300-165.html> (275 Q&As) Keywords: 300-165 exam dumps, 300-165 exam questions, 300-165 VCE dumps, 300-165 PDF dumps, 300-165 practice tests, 300-165 study guide, 300-165 braindumps, Implementing Cisco Data Center Infrastructure (DCII) Exam P.S. New 300-165 DCII dumps PDF: [https://drive.google.com/open?id=0B-ob6L\\_QjGLpMVRmUUJZRWU3cU0](https://drive.google.com/open?id=0B-ob6L_QjGLpMVRmUUJZRWU3cU0) >> New 300-160 DCID dumps PDF: [https://drive.google.com/open?id=0B-ob6L\\_QjGLpeVhtaU1qdFl4WGs](https://drive.google.com/open?id=0B-ob6L_QjGLpeVhtaU1qdFl4WGs) >> New 300-170 DCVAI dumps PDF: [https://drive.google.com/open?id=0B-ob6L\\_QjGLpNVNCbDRrNUN3NWM](https://drive.google.com/open?id=0B-ob6L_QjGLpNVNCbDRrNUN3NWM) >> New 300-175 DCUCI dumps PDF: [https://drive.google.com/open?id=0B-ob6L\\_QjGLpcTYwUlg5R2o2Tlk](https://drive.google.com/open?id=0B-ob6L_QjGLpcTYwUlg5R2o2Tlk) >> New 300-180 DCIT dumps PDF: [https://drive.google.com/open?id=0B-ob6L\\_QjGLpNWtfazZEX1o5eWc](https://drive.google.com/open?id=0B-ob6L_QjGLpNWtfazZEX1o5eWc) NEW QUESTION 242 Refer to the exhibit:



You have a suboptimal outbound routing issue in the data center. Which two options can you use to resolve the issue? (Choose two.) A. On the QTV edge devices, configure an ACL that prevents hosts from reaching the FHRP master router on the other site. B. Configure the same FHRP priority on all of the OTV edge devices in both sites. C. Remove the VLAN from which FHRP hellos are sent from the extended VLAN range. D. On the QTV edge devices, configure a VACL that prevents FHRP hellos from being forwarded on the overlay. E. On the OTV VDC configure an OTV MAC route filter that prevents the virtual FHRP MAC address from being announced to other sites. Answer: DE NEW QUESTION 243 Refer to the exhibit:

```
switch# configure terminal
switch(config)# install fe
switch(config)# feature-se
switch(config)# feature vn
```

```
switch# configure terminal
switch(config)# vlan 90
switch(config-vlan)# mode :
switch(config-vlan)# vn-se
```

Which type of domain does the configuration create? A. Layer 3 local B. Layer 2 global C. Layer 3 global D. Layer 2 local Answer: B NEW QUESTION 244

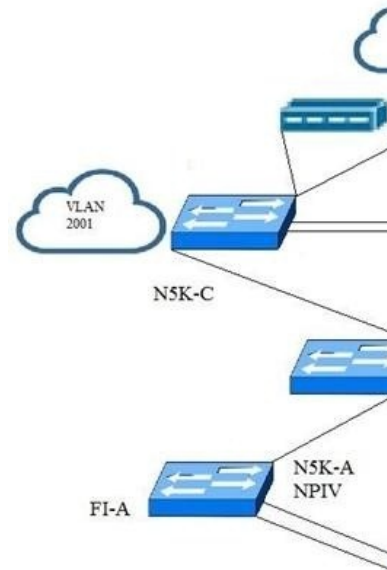
Refer to the exhibit:

```
fcoe fcmmap 0e.fc.00
fcoe fcf-priority 42
fcoe fka-adv-period 42

www.passleader.com

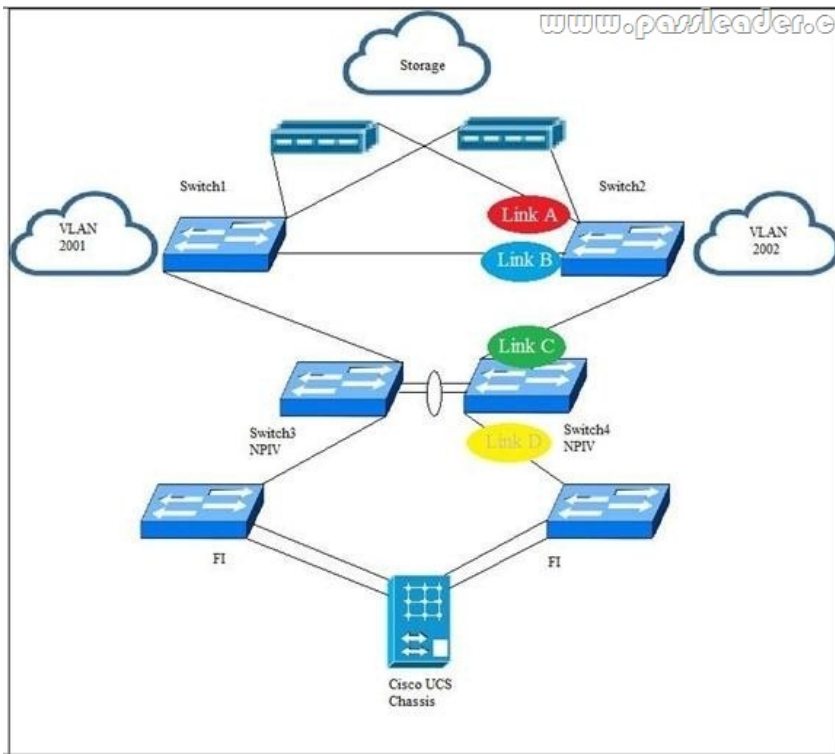
fcdomain fcid persistent vsan 2
fcdomain fcid database
vsan 9 wwn 40:15:18:c2:00:61:c7:a1 fcid 0x5eff01 area
```

Which fabric-provided MAC address does the switch use when connecting to an end node on VSAN 9?  
A. 40.15.18.5e.ff.01 B. 0e.fc.00.5e.ff.01 C. 5e.ff.01.0e.fc.00  
D. 40.15.18.0e.fc.00 Answer: B NEW QUESTION 245 Refer to the exhibit:



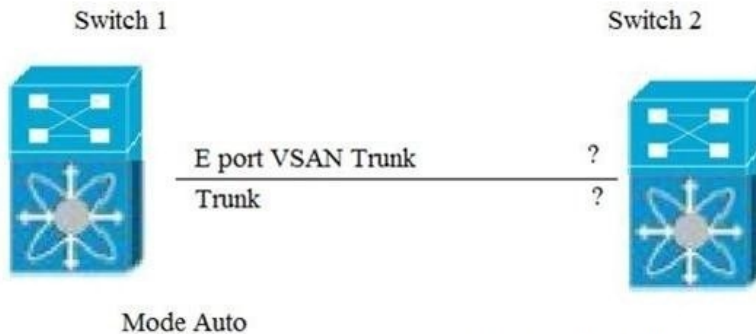
[www.passleader.com](http://www.passleader.com)

What is the effect of the bind interface eth 1/16 command on the vfc130 interface? A. It attaches the physical Fibre Channel interface to the virtual Fibre Channel interface. B. It attaches the FCoE interface to the VSAN interface. C. It transitions the port to the forwarding state of the spanning tree automatically. D. It attaches the virtual Fibre Channel interface to the physical interface. Answer: A NEW QUESTION 246  
Refer to the exhibit:



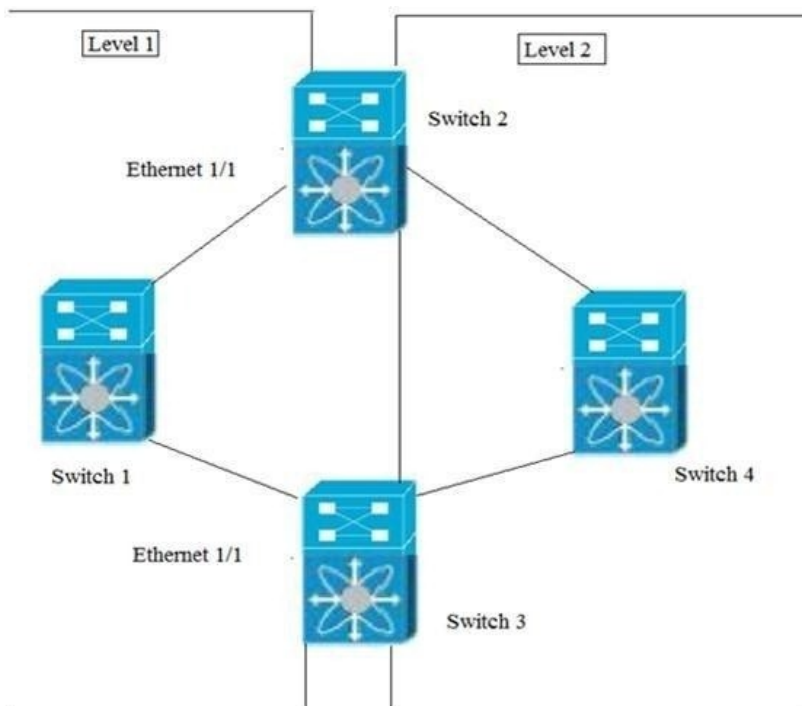
```
interface fc1/16
mode F
vsan database
vsan 2002 interface fc2/15
```

The configuration belongs to which link? A. Link C on Switch4 B. Link D on Switch4 C. Link B on Switch2 D. Link A on Switch2 Answer: D NEW QUESTION 247 Refer to the exhibit:



www.passleader.com

Which two features must you configure on Switch 2 to establish a VSAN trunk between Switch 1 and Switch 2? (Choose two.)  
 A. F port B. Trunk Mode On C. NP port D. Trunk Mode Auto E. E port Answer: BE NEW QUESTION 248 Refer to the exhibit:



```
Switch 2
router isis cisco
address-family ipv4 unicast
net 47.0004.004d.0001.0002.0b33.2222.00
is-type level 1-2
set-overload-bit on-startup 30
interface ethernet 1/1
ip router isis cisco
isis circuit-type level-1
isis metric 25

Switch 3
router isis cisco
address-family ipv4 unicast
net 47.0004.004d.0001.0002.0b33.2222.00
is-type level 1-2
set-overload-bit on-startup 60
interface attached-bit
interface ethernet 1/1
ip router isis cisco
isis circuit-type level-1
isis metric 75
```

www.passleader.com

How does Switch 1 route traffic to the Level 2 network? A.&#160;&#160;&#160; Switch 1 prefers Switch 3 as the path to the Level 2 network. B.&#160;&#160;&#160; Switch 1 sends 75 percent of the traffic destined for Level 2 to Switch 3 and 25 percent to Switch 2. C.&#160;&#160;&#160; Switch 1 load balances traffic destined for Level 2 between Switch 2 and Switch 3. D.&#160;&#160;&#160; Switch 1 prefers Switch 2 as the path to the Level 2 network. Answer: D NEW QUESTION 249 Refer to the exhibit:

```
N7K-1
spanning-tree vlan 1-10 priority 8192

vpc domain 100
role priority 100
peer-keepalive destination 10.1.1.2 source 10.1.1.1
vrf default
delay restore 60
peer-switch
auto-recovery
ip arp synchronize

N7K-2
spanning-tree vlan 1-10 priority 8192

vpc domain 100
role priority 200
peer-keepalive destination 10.1.1.1 source 10.1.1.2
vrf default
delay restore 60
peer-switch
auto-recovery
ip arp synchronize
```

www.passleader.com

Which statement about STP on the vPC is true? A.&#160;&#160;&#160; N7K-1 preempts N7K-2 as the STP root. B.&#160;&#160;&#160; N7K-1 appears as the STP root. C.&#160;&#160;&#160; N7K-1 and N7K-2 appear as a single STP bridge. D.&#160;&#160;&#160; N7K-2 appears as the STP root. Answer: B NEW QUESTION 250 Which three types of interfaces are required when implementing VXLAN on a Cisco Nexus 9000 Series Switch? (Choose three.) A.&#160;&#160;&#160; Ethernet B.&#160;&#160;&#160; Overlay C.&#160;&#160;&#160; ACI D.&#160;&#160;&#160; Loopback E.&#160;&#160;&#160; NVE F.&#160;&#160;&#160; Management Answer: AED NEW QUESTION 251 Which feature does a vFC interface support? A.&#160;&#160;&#160; SAN port channels B.&#160;&#160;&#160; Port tracking

C. Buffer-to-buffer credits D. F Port mode Answer: D NEW QUESTION 252

Which two actions are required when configuring LISP virtual machine mobility across subnets? (Choose two.)

A. Filter HSRP hello messages across data centers to create an active-active HSRP setup.

B. Enable proxy ARP on the interfaces that allow virtual machine mobility. C. Configure different MAC addresses across all the HSRP groups.

D. Ensure that all the HSRP virtual IP addresses are different in the extended LANs. E. Propagate ARP packets across all the broadcast domains of the data center.

Answer: AB NEW QUESTION 253 ..... Download the newest PassLeader 300-165 dumps from passleader.com now! 100% Pass Guarantee! 300-165 PDF dumps & 300-165 VCE dumps:

<https://www.passleader.com/300-165.html> (275 Q&As) (New Questions Are 100% Available and Wrong Answers Have Been Corrected! Free VCE simulator!) P.S. New 300-165 DCII dumps PDF:

[https://drive.google.com/open?id=0B-ob6L\\_QjGLpMVRmUUJZRWU3cU0](https://drive.google.com/open?id=0B-ob6L_QjGLpMVRmUUJZRWU3cU0) >> New 300-160 DCID dumps PDF:

[https://drive.google.com/open?id=0B-ob6L\\_QjGLpeVktaU1qdF14WGs](https://drive.google.com/open?id=0B-ob6L_QjGLpeVktaU1qdF14WGs) >> New 300-170 DCVAI dumps PDF:

[https://drive.google.com/open?id=0B-ob6L\\_QjGLpNVNCbDRrNUN3NWM](https://drive.google.com/open?id=0B-ob6L_QjGLpNVNCbDRrNUN3NWM) >> New 300-175 DCUCI dumps PDF:

[https://drive.google.com/open?id=0B-ob6L\\_QjGLpcTYwUlg5R2o2Tlk](https://drive.google.com/open?id=0B-ob6L_QjGLpcTYwUlg5R2o2Tlk) >> New 300-180 DCIT dumps PDF:

[https://drive.google.com/open?id=0B-ob6L\\_QjGLpNWfzZEX1o5eWc](https://drive.google.com/open?id=0B-ob6L_QjGLpNWfzZEX1o5eWc)