

[2016-NEW! Free Valid PassLeader 485q 70-410 Exam Questions Ensure 100% Exam Passing (Question 31 – Question 60)

How to pass the newest 70-410 exam? What new questions are on the latest 70-410 exam? PassLeader's best 70-410 VCE and PDF exam dumps/70-410 sample questions will tell you all about the 70-410 exam. For all PassLeader's 485q 70-410 exam questions are the newest and covered all new added questions and answers, which will help you 100% passing 70-410 exam. And we PassLeader will continue update 70-410 exam questions and answers, you will never fail the 70-410 exam. Hurry up and get the free VCE Player with your premium 70-410 VCE dumps from passleader.com now! keywords: 70-410 exam,485q 70-410 exam dumps,485q 70-410 exam questions,70-410 pdf dumps,70-410 practice test,70-410 vce dumps,70-410 study guide,70-410 braindumps,Installing and Configuring Windows Server 2012 R2 Exam P.S. Download Free 70-410 PDF Dumps and Preview PassLeader 70-410 VCE Dumps At The End Of This Post!!! (Ctrl+End)

QUESTION 31 Your network contains an Active Directory domain named contoso.com. The domain contains a domain controller named DC1 that runs Windows Server 2012 R2. You need to configure a central store for the Group Policy Administrative Templates. What should you do on DC1? A. From Server Manager, create a storage pool. B. From Windows Explorer, copy the PolicyDefinitions folder to the SYSVOLcontoso.compolicies folder. C. From Server Manager, add the Group Policy Management feature. D. From Windows Explorer, copy the PolicyDefinitions folder to the NETLOGON share. Answer: B

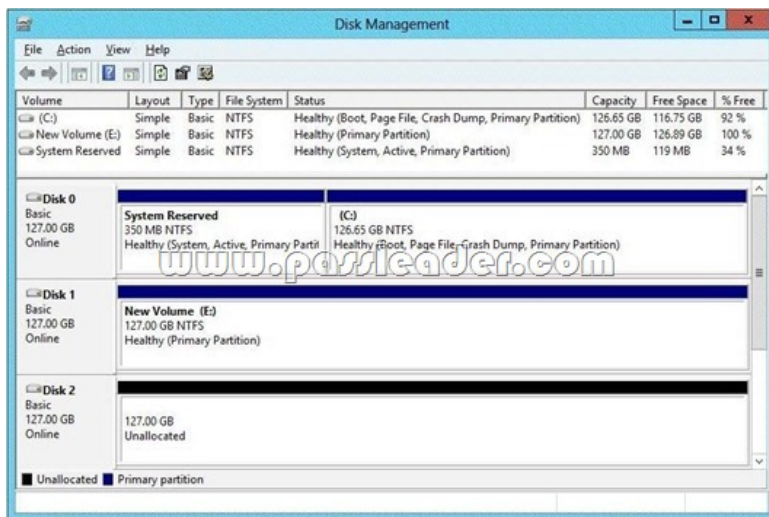
QUESTION 32 You install Windows Server 2012 R2 on a standalone server named Server1. You configure Server1 as a VPN server. You need to ensure that client computers can establish PPTP connections to Server1. Which two firewall rules should you create? (Each correct answer presents part of the solution. Choose two.) A. An inbound rule for protocol 47 B. An outbound rule for protocol 47 C. An inbound rule for TCP port 1723 D. An inbound rule for TCP port 1701 E. An outbound rule for TCP port 1723 F. An outbound rule for TCP port 1701 Answer: AC

QUESTION 33 Your network contains an Active Directory domain named adatum.com. The computer accounts for all member servers are located in an organizational unit (OU) named Servers. You link a Group Policy object (GPO) to the Servers OU. You need to ensure that the domain's Backup Operators group is a member of the local Backup Operators group on each member server. The solution must not remove any groups from the local Backup Operators groups. What should you do? A. Add a restricted group named adatumBackup Operators. Add Backup Operators to the This group is a member of list. B. Add a restricted group named adatumBackup Operators. Add Backup Operators to the Members of this group list. C. Add a restricted group named Backup Operators. Add adatumBackup Operators to the This group is a member of list. D. Add a restricted group named Backup Operators. Add adatumBackup Operators to the Members of this group list. Answer: A

QUESTION 34 Your network contains an Active Directory domain named contoso.com. All servers run Windows Server 2012 R2. An application named Appl.exe is installed on all client computers. Multiple versions of Appl.exe are installed on different client computers. Appl.exe is digitally signed. You need to ensure that only the latest version of Appl.exe can run on the client computers. What should you create? A. An application control policy packaged app rule B. A software restriction policy certificate rule C. An application control policy Windows Installer rule D. An application control policy executable rule Answer: D

QUESTION 35 Your network contains an Active Directory domain named contoso.com. All domain controllers run Windows Server 2012 R2. You need to ensure that the local Administrator account on all computers is renamed to L_Admin. Which Group Policy settings should you modify? A. Security Options B. User Rights Assignment C. Restricted Groups D. Preferences Answer: A

QUESTION 36 You have a server that runs Windows Server 2012 R2. The disks on the server are configured as shown in the exhibit. (Click the Exhibit button.) You need to create a storage pool that contains Disk 1 and Disk 2. What should you do first?



A. Delete volume E B. Convert Disk 1 and Disk 2 to dynamic disks
 C. Convert Disk 1 and Disk 2 to GPT disks D. Create a volume on Disk 2 Answer: A

QUESTION 37 You have a server named Server1 that runs Windows Server 2012 R2. You add a 4-TB disk named Disk 5 to Server1. You need to ensure that you can create a 3-TB volume on Disk 5. What should you do?
 A. Create a storage pool. B. Convert the disk to a dynamic disk. C. Create a VHD, and then attach the VHD. D. Convert the disk to a GPT disk. Answer: D

QUESTION 38 You have a server named Server1 that has a Server Core installation of Windows Server 2008 R2. Server1 has the DHCP Server server role and the File Server server role installed. You need to upgrade Server1 to Windows Server 2012 R2 with the graphical user interface (GUI). The solution must meet the following requirements:
 - Preserve the server roles and their configurations. - Minimize Administrative effort. What should you do?
 A. On Server1, run setup.exe from the Windows Server 2012 R2 installation media and select Server with a GUI. B. Start Server1 from the Windows Server 2012 R2 installation media and select Server Core Installation. When the installation is complete, add the Server Graphical Shell feature.
 C. Start Server1 from the Windows Server 2012 R2 installation media and select Server with a GUI. D. On Server1, run setup.exe from the Windows Server 2012 R2 installation media and select Server Core Installation. When the installation is complete, add the Server Graphical Shell feature Answer: D

QUESTION 39 Your network contains two servers named Server1 and Server2 that run Windows Server 2012 R2. You need to install the Remote Desktop Services server role on Server2 remotely from Server1. Which tool should you use?
 A. The dsadd.exe command B. The Server Manager console C. The Remote Desktop Gateway Manager console D. The Install-RemoteAccess cmdlet Answer: B

QUESTION 40 You have a server named Server1 that runs a full installation of Windows Server 2012 R2. You need to uninstall the graphical user interface (GUI) on Server1. You must achieve this goal by using the minimum amount of Administrative effort. What should you do?
 A. Reinstall Windows Server 2012 R2 on the server B. From Server Manager, uninstall the User Interfaces and Infrastructure feature C. From Windows PowerShell, run Uninstall-WindowsFeature PowerShell-ISE D. From Windows PowerShell, run Uninstall-WindowsFeature Desktop-Experience Answer: B

QUESTION 41 Your network contains a server named Server1 that runs Windows Server 2012 R2. Server1 has the Hyper-V server role installed. Server1 hosts four virtual machines named VM1, VM2, VM3, and VM4. Server1 is configured as shown in the following table.

Hardware component	Configuration
Processor	Eight quad-core CPUs that have non-uniform memory access (NUMA)
Memory	32 GB of RAM
Disk	Two local 4-TB disks
Network	Eight network adapters VMQ-supported PCI-SIG-supported

You install Windows Server 2012 R2 on VM2 by using Windows Deployment Services (WDS). You need to ensure that the next time VM2 restarts, you can connect to the WDS server by using PXE. Which virtual machine setting should you configure for VM2? A. NUMA topology B. Resource control C. Resource metering D. Virtual Machine Chimney E. The VLAN ID F. Processor Compatibility G. The startup order H. Automatic Start Action I. Integration Services J. Port mirroring K. Single-root I/O virtualization Answer: G QUESTION 42 Your network contains an Active Directory domain named contoso.com. The domain contains two domain controllers. The domain controllers are configured as shown in the following table.

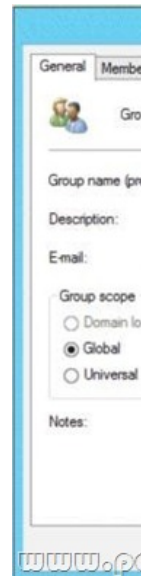
Name	Operating system	Operation master role
DC1	Windows Server 8	<ul style="list-style-type: none"> Domain naming master Schema master
DC2	Windows Server 2008 R2	<ul style="list-style-type: none"> PDC emulator RID master Infrastructure master

In the perimeter network, you install a new server named Server1 that runs a Server Core Installation of Windows Server 2012 R2. You need to join Server1 to the contoso.com domain. What should you use? A. The New-ADComputer cmdlet B. The djoin.exe command C. The dsadd.exe command D. The Add-Computer cmdlet Answer: D QUESTION 43 Your network contains an Active Directory domain named adatum.com. The domain contains three domain DC3 loses network connectivity due to a hardware failure. You plan to remove DC3 from the domain. You log on to DC3. You need to identify which service location (SRV) records are registered by DC3. What should you do?

Name	Operating system	Additional server roles
DC1	Windows Server 2008 R2	DNS Server
DC2	Windows Server 2012	DNS Server
DC3	Windows Server 2012	None

A. Open the %windir%\system32\config\netlogon.dns file B. Run dcdiag /test:dns C. Open the %windir%\system32\dnshelp\adatum.com.dns file D. Run ipconfig /displaydns Answer: A QUESTION 44 Your network contains an Active Directory forest that contains three domains. A group named Group1 is configured as a domain local distribution group in the forest root domain. You plan to grant Group1 read-only access to a shared folder named Share1. Share1 is located in a child domain. You need to ensure that the members of Group1 can access Share1. What should you do first? A. Convert Group1 to a global distribution group. B. Convert Group1 to a universal security group. C. Convert Group1 to a universal distribution group. D. Convert Group1 to a domain local security group Answer: B QUESTION 45 Your network contains an Active Directory domain named contoso.com. All domain controllers run Windows Server 2008 R2. One of the domain controllers is named DC1. The network contains a member server named Server1 that runs Windows Server 2012 R2. You need to promote Server1 to a domain controller by using install from media (IFM). What should you do first? A. Create a system state backup of DC1. B. Create IFM media on DC1. C. Upgrade DC1 to Windows Server 2012 R2. D. Run the Active Directory Domain Services Configuration Wizard on Server1. E. Run the Active Directory Domain Services Installation Wizard on DC1. Answer: C QUESTION 46 Your network contains an Active Directory domain named contoso.com. The domain contains 100 servers. The servers are contained in an organizational unit (OU) named ServersOU. You need to create a group named Group1 on all of the servers in the domain. You must ensure that Group1 is added only to the servers. What should you configure? A. a Local Users and Groups preferences setting in a Group Policy linked to the Domain Controllers OU B. a Restricted Groups setting in a Group Policy linked to the domain C. a Local Users and Groups preferences setting in a Group Policy linked to ServersOU D. a Restricted Groups setting in a Group Policy linked to ServersOU Answer: C QUESTION 47 Your network contains an Active Directory domain named adatum.com. The domain contains several thousand member servers that run Windows Server 2012 R2. All of the computer accounts for the member servers are in an organizational unit (OU) named ServersAccounts. Servers are restarted only occasionally. You need to identify which servers were restarted during the last two days. What should you do? A. Run dsquery computer and specify the -staiepwdpara meter B. Run Get-ADComputer and specify the

SearchScope parameter C. Run Get-ADComputer and specify the LastLogon property
D. Run dsquery server and specify the -o parameter Answer: C QUESTION 48 Your network contains an Active Directory domain named contoso.com. You log on to a domain controller by using an account named Admin1. Admin1 is a member of the Domain Admins group. You view the properties of a group named Group1 as shown in the exhibit. (Click the Exhibit button.) Group1 is located in an organizational unit (OU) named OU1. You need to ensure that you can modify the Security settings of Group1 by using Active Directory Users and Computers. What should you do from Active Directory Users and Computers?

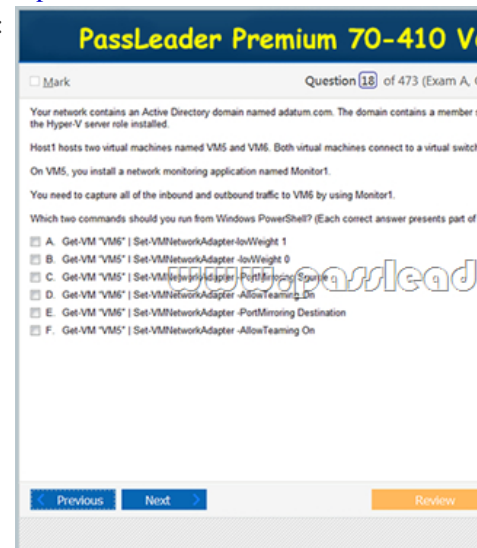


A. From the View menu, select Users, Contacts, Groups, and Computers as containers.
B. Right-click OU1 and select Delegate Control. C. From the View menu, select Advanced Features. D. Right-click contoso.com and select Delegate Control. Answer: C QUESTION 49 Your network contains an Active Directory domain named contoso.com. The domain contains two domain controllers named DC1 and DC2. You install Windows Server 2012 on a new computer named DC3. You need to manually configure DC3 as a domain controller. Which tool should you use? A. Server Manager B. winrm.exe C. Active Directory Domains and Trusts D. dcpromo.exe Answer: A QUESTION 51 You have a server named Core1 that has a Server Core Installation of Windows Server 2012 R2. Core1 has the Hyper-V server role installed. Core1 has two network adapters from different third-party hardware vendors. You need to configure network traffic failover to prevent connectivity loss if a network adapter fails. What should you use? A. New-NetSwitchTeam B. Add-NetSwitchTeamMember C. Install-Feature D. netsh.exe Answer: A QUESTION 52 You have a server named Server1 that runs Windows Server 2012 R2. You connect three new hard disks to Server1. You need to create a storage space that contains the three disks. The solution must meet the following requirements: - Provide fault tolerance if a single disk fails. - Maximize the amount of files that can be stored in the storage space. What should you create? A. A simple space B. A spanned volume C. A mirrored space D. A parity space Answer: D QUESTION 53 You perform a Server Core Installation of Windows Server 2012 R2 on a server named Server1. You need to add a graphical user interface (GUI) to Server1. Which tool should you use? A. The setup.exe command B. The dism.exe command C. The imagex.exe command D. The Add-WindowsPackage cmdlet Answer: B QUESTION 54 You have a server named Server1 that runs Windows Server 2012 R2. Server1 has five network adapters. Three of the network adapters are connected to a network named LAN1. The two other network adapters are connected to a network named LAN2. You need to create a network adapter team from the three network adapters connected to LAN 1. Which tool should you use? A. Routing and Remote Access B. Network and Sharing Center C. Server Manager D. Network Load Balancing Manager Answer: C QUESTION 55 You have a server named Server1 that runs Windows Server 2012 R2. You need to remove Windows Explorer, Windows Internet Explorer, and all related components and files from Server1. What should you run on Server1? A. Uninstall-WindowsFeature Server-Gui-Mgmt-Infra Remove B. Uninstall-WindowsFeature Server-Gui-Shell Remove C. msixexec.exe /uninstall

iexplore.exe /x D. msexec.exe /uninstall explorer.exe /x Answer: B QUESTION 56 You have a server named Server1 that runs Windows Server 2012 R2. Server1 has the Hyper-V server role installed. On Server1, you create a virtual machine named VM1. VM1 has a legacy network adapter. You need to assign a specific amount of available network bandwidth to VM1. What should you do first? A. Remove the legacy network adapter, and then run the Set-VMNetworkAdaptercmdlet B. Add a second legacy network adapter, and then run the Set-VMNetworkAdaptercmdlet C. Add a second legacy network adapter, and then configure network adapter teaming D. Remove the legacy network adapter, and then add a network adapter Answer: D
QUESTION 57 Your network contains an Active Directory domain named adatum.com. The domain contains a server named Server1 that runs Windows Server 2012 R2. On a server named Core1, you perform a Server Core Installation of Windows Server 2012 R2. You join Core1 to the adatum.com domain. You need to ensure that you can use Event Viewer on Server1 to view the event logs on Core1. What should you do on Core1? A. Run the Enable-NetFirewallRulecmdlet B. Run sconfig.exe and configure remote management C. Run the Disable-NetFirewallRulecmdlet D. Run sconfig.exe and configure the network settings Answer: A
QUESTION 58 Your network contains a file server named Server1 that runs Windows Server 2012 R2. All client computers run Windows 8. You need to ensure that when users are connected to the network, they always use local offline files that are cached from Server1. Which Group Policy setting should you configure? A. Configure slow-link mode B. Configure Slow link speed C. Enable file synchronization on costed networks D. Turn on economical application of Administratively assigned Offline Files Answer: A
QUESTION 59 Your network contains an Active Directory domain named contoso.com. All servers run either Windows Server 2008 R2 or Windows Server 2012 R2. All client computers run either Windows 7 or Windows 8. The domain contains a member server named Server1 that runs Windows Server 2012 R2. Server1 has the File and Storage Services server role installed. On Server1, you create a share named Share1. You need to ensure that users can use Previous Versions to restore the files in Share1. What should you configure on Server1? A. The Shadow Copies settings B. A Windows Server Backup schedule C. A data recovery agent D. The Recycle Bin properties Answer: A
QUESTION 60 You have a server named Server1 that runs Windows Server 2012 R2. Server1 has the Print and Document Services server role installed. Server1 is connected to two identical print devices. You need to ensure that users can submit print jobs to the print devices. The solution must ensure that if one print device fails, the print jobs will print automatically on the other print device. What should you do on Server1? A. Add two printers and configure the priority of each printer. B. Add one printer and configure printer pooling. C. Install the Network Load Balancing (NLB) feature, and then add one printer. D. Install the Failover Clustering feature, and then add one printer. Answer: B

Download Free 70-410 PDF Dumps From Google Drive:

https://drive.google.com/open?id=0B-ob6L_OjGLpfnJzOE1fWnJOWVtaE93SnJNT3gtaTNYynVpZkw5THBSMWRKbFlfaXh1azg (Explanation For Every Question Is Available!) PassLeader 70-410 VCE Dumps Screenshots:



The screenshot displays a software interface for a certification exam. At the top, it reads "PassLeader Premium 70-410 VCE Dumps Preview". Below this, there is a navigation bar with "Mark", "Question 27 of 473 (Exam A, Q7)", and "Instructions". The main content area is titled "HOTSPOT" and contains the following text: "You have a Hyper-V host named Hyperv1 that runs Windows Server 2012 R2. Hyperv1 hosts a virtual machine named Server1. Server1 uses a disk named Server1.vhdx that is stored locally on Hyperv1. You stop Server1, and then you move Server1.vhdx to an iSCSI target that is located on another server. You need to configure Server1 to meet the following requirements: • Ensure that Server1 can start by using Server1.vhdx. • Prevent Server1.vhdx from consuming more than 500 IOPS on the iSCSI target." Below the text is a window titled "Settings for SERVER1 on SERVER1" showing various configuration options such as "Add Hardware", "Firmware", "Memory", "Processor", "Compatibility", "NUMA", "SCSI Controller", and "Hard Drive". At the bottom of the interface, there are buttons for "Previous", "Next", "Review", "Show Answer", "Show List", "Save Session", and "End Exam".

Download New 70-410 VCE Dumps From PassLeader: <http://www.passleader.com/70-410.html> (New Questions Are 100% Available and Wrong Answers Have Been Corrected!!!)