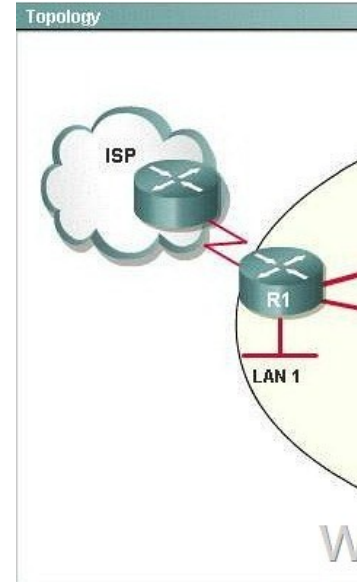


## CCNA ICND1 Hotspot - RIP

This item contains several questions that you must answer. You can view these questions by clicking on the corresponding button to the left. Changing questions can be accomplished by clicking the numbers to the left of each question. In order to complete the questions, you will need to refer to the topology. To gain access to the topology, click on the topology button at the bottom of the screen. When you have finished viewing the topology, you can return to your questions by clicking on the Questions button to the left. Each of the windows can be minimized by clicking on the [-]. You can also reposition a window by dragging it by the title bar. Refer to the topology. Using the information shown, answer the five questions shown on the Questions tab.



Question 1: On which router should a default route be configured? A - on the ISP router B - on R1 C - on R2 D - on R3 E - on R4 **Answer: B** Question 2: With all links operational and all routers converged, which of the following describes the messaging between routers? A - Hellos are sent every five seconds. B - Multicasts are sent every 60 seconds. C - Broadcasts are sent every 30 seconds. D - No messaging unless the topology changes. **Answer: C** Question 3: Which of the following describes the route update process if the interface from R4 connected to LAN 4 goes down? A - No updates occur B - R4 tells both R1 and R3 the network not accessible. Both R3 and R1 update R2. C - R4 tells only R1 the network is not accessible. R1 updates R2 and R2 updates R3. D - R4 tells only R3 the network is not accessible. R3 updates R2 and R2 updates R1. **Answer: B** Question 4: Why would RIP be used rather than static routes on R1, R2, R3, and R4? A - RIP creates more accurate than static routes. B - RIP uses less network resources than do static routes. C - RIP is supported by more different vendors equipment than static routes. D - RIP requires less configuration to automatically adjust when links go down than static routes. **Answer: D** Question 5: On which router should a static route be configured? A - on the ISP router B - on R1 C - on R2 D - on R3 E - on R4 **Answer: A**