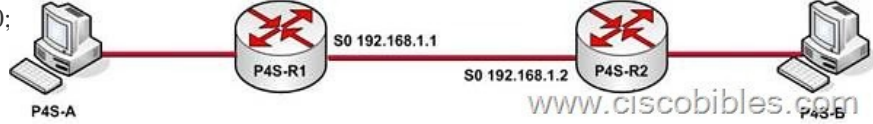


CCNA ICND1 Lab8 - Configuration of RIPv2

Lab Tips: Cisco implementation of RIPv2 supports two modes of authentication: plain text authentication and Message Digest 5 (MD5) authentication. Plain text authentication mode is the default setting in every RIPv2 packet, when authentication is enabled. Plain text authentication should not be used when security is an issue, because the unencrypted authentication password is sent in every RIPv2 packet. **Lab Topology:**



Lab Requirements: Configure the routers with RIPv2 so that all devices can ping any other device. **Lab Process:**

```
Basic route configuration omitted
P4S-R1 Router>en Router#conf t Router(config)#hostname P4S-R1
P4S-R1 (config)#int S0
P4S-R1(config-if)#ip add 192.168.1.1 255.255.255.0
P4S-R1 (config-if)#clock rate 64000
P4S-R1 (config-if)#no shut
P4S-R1 (config-if)#exit
P4S-R1 (config-router)router rip
P4S-R1 (config-router)version 2
P4S-R1 (config-router)network 192.168.1.0
P4S-R1 (config-router)end
P4S-R2 Router>en Router#conf t Router(config)#hostname P4S-R2
P4S-R2 (config)#int S0
P4S-R2 (config-if)#ip add 192.168.1.2 255.255.255.0
P4S-R2 (config-if)#no shut
P4S-R2 (config-if)#exit
P4S-R2 (config-router)router rip
P4S-R2 (config-router)version 2
P4S-R2 (config-router)network 192.168.1.0
P4S-R2 (config-router)end
```