

Simulator - Boson NetSim for CCNP 7.06(Crack)

Boson NetSim® software is an application that simulates Cisco® Systems' networking hardware and software and is designed to aid the user in learning the Cisco IOS command structure.

The simulate scripted labs for the end user's experience, without actually simulating what is really happening within the network. NetSim? utilizes Boson's proprietary Network Simulator® and Router Simulator® software technologies along with the Boson Virtual Packet Technology® engine to create individual packets that are routed and switched through the simulated network, allowing NetSim to build an appropriate virtual routing table, and simulate true networking. This technology allows many users of the Boson NetSim to go far beyond the scope of the examples in the included labs.

Boson offers three certification-focused products, [NetSim for CCENT 7.0](#), [NetSim for CCNA 7.0](#) and [NetSim for CCNP 7.0](#). Each supports the technologies and skills you will need for the respective certifications.

Boson NetSim software offers more versatility and support than any other aftermarket software. NetSim software also includes a comprehensive lab menu that contains lessons and labs covering routing protocols, Cisco devices, switching, topological design, and much more.

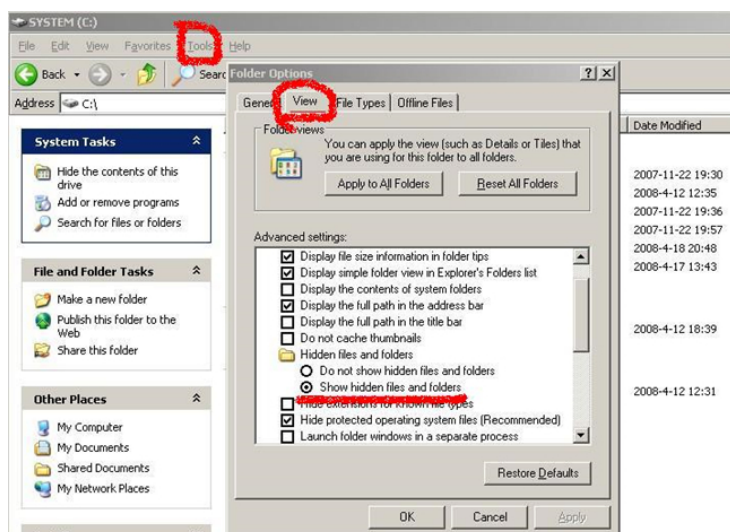
Next, i will tell you that how to crack the Boson Netsim for CCNP 7.06(contain CCNA lab also),it's simple, following me:

Step1: Download and install Boson Netsim for CCNP 7.02 (Install in the default path)| [Download](#)

Step2: Download Boson Netsim for CCNP 7.06 backup | [Download](#) and ?mscon43demo.dll?file | [Download](#)

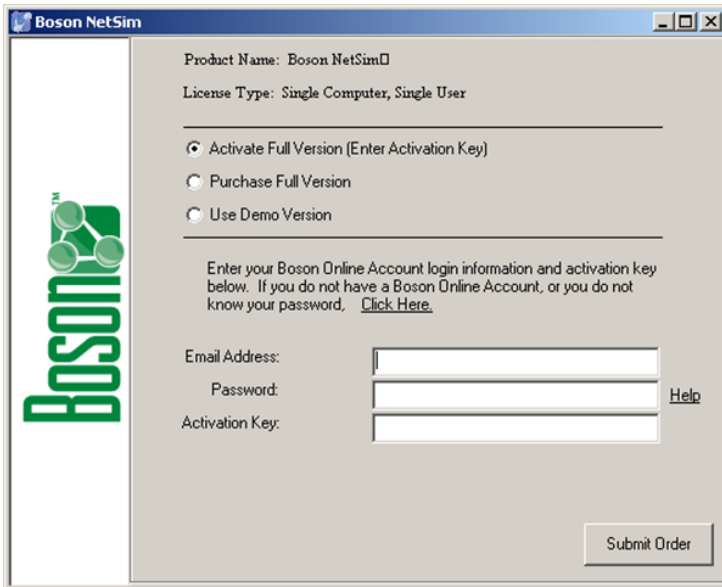
Step3: Open the following folder,

C:\Documents and Settings\All Users\Application Data\Boson\Software\Boson NetSim for CCNP 7.0 (Need to Select Folder Options in the show all hidden files and folders, see below exhibit)

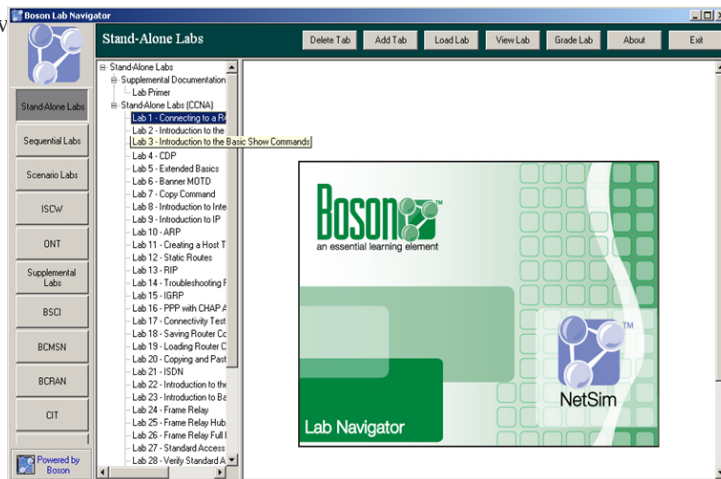


Copy the Boson Netsim for CCNP 7.06 backup files (in folder) and the ?mscon43demo.dll?file to above folder, and cover.

Now, you can open the Boson Netsim for CCNP 7.0 software, and select ?Use Demo Version?



And you will see Lab interface shown below



Don't wait here, let's go to start lab!!!

[This hidden content is only available for our VIP member. Become VIP Member NOW